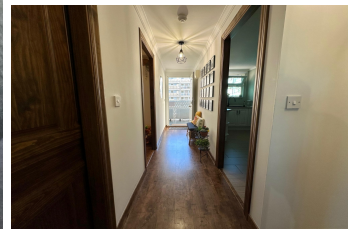




# A.E REAL ESTATE

MANAGING ALL YOUR PROPERTY NEEDS



## Nelson's View

AES2570 | APARTMENT

**£330,000**

BEDS: 2 | BATHS: 1 | AREA: 79m<sup>2</sup>

### PROPERTY FEATURES

**Category 2:** No

Partly Furnished Private Parking

**Hepps:** No

**3 Year Residency:** Yes

### PROPERTY DESCRIPTION

**\*\*Spacious 2-Bedroom Home with Versatile Layout in Nelson's View\*\*** This beautifully presented home has been converted from three bedrooms into a spacious two-bedroom layout, offering an expansive living area perfect for modern living. The conversion can easily be reverted back to three bedrooms if desired, providing flexible accommodation to suit your needs. Nestled in Nelson's View, renowned for its family-oriented community, this property is ideally located close to stunning beaches, local supermarkets, and three convenient bus routes to town. Situated in the tranquil South District, residents enjoy a mild microclimate and picturesque walks along Rosia Bay and Little Bay, making it a perfect retreat for nature lovers. A wonderful opportunity for comfortable, flexible living in a sought-after neighborhood. Please contact us for further information on 56021966 or email us at [info@aerealestate.gi](mailto:info@aerealestate.gi)

📍 3 Cornwall's Parade

☎ (+350) 560 21966 ✉ [info@aerealestate.gi](mailto:info@aerealestate.gi)

© 2025 AE Real Estate CMS. All Rights Reserved.